



DL

 DECORATIVE
LABELING

STYROTECH ST-1550 STRETCH SLEEVER



STRETCH APPLICATIONS



Dependable, value priced stretch sleeve applicator for speeds up to 30 cpm

Styrotech ST-1550 stretch sleeves represent the next generation of the popular ST-1500. Like the ST-1500, ST-1550 stretch sleeves are designed to accommodate a wide range of container types and sizes including large jugs and bottles. They deliver dependable performance at steady-state speeds up to 30 cpm.

The ST-1550 features numerous component and design updates including a new frame that provides easier access from the side of the applicator, a more powerful Allen-Bradley PLC, a new 7" HMI, and common sensors and air cylinders.

Styrotech ST-1550 stretch sleeves are a dependable, value priced option for low to mid-speed production requirements. Styrotech stretch sleeves are known around the world for their performance and the new and improved ST-1550 ensures that this legacy will continue.

Axon Styrotech stretch sleeves are designed and manufactured in Raleigh, NC by P.E. North America. Parts and service support are also provided from the Raleigh, NC facility.

FEATURES AND BENEFITS

- **Small, space efficient footprint** - Small footprint saves valuable floor space
- **Easy installation** - Installs over existing conveyor; no expensive conveyor modifications required
- **New frame design with rear access electrical enclosure** - Enables easier operator and maintenance access from side of the machine
- **Upgraded loader assembly** - Linear rail and lightweight arms increased rigidity, decreased maintenance
- **Allen-Bradley PLC** - Industry standard machine controls
- **New 7" color touchscreen HMI** - Ease of operation, enhanced messaging
- **Upgraded print registration sensor** - More accurate film positioning

STYROTECH ST-1550 STRETCH SLEEVE

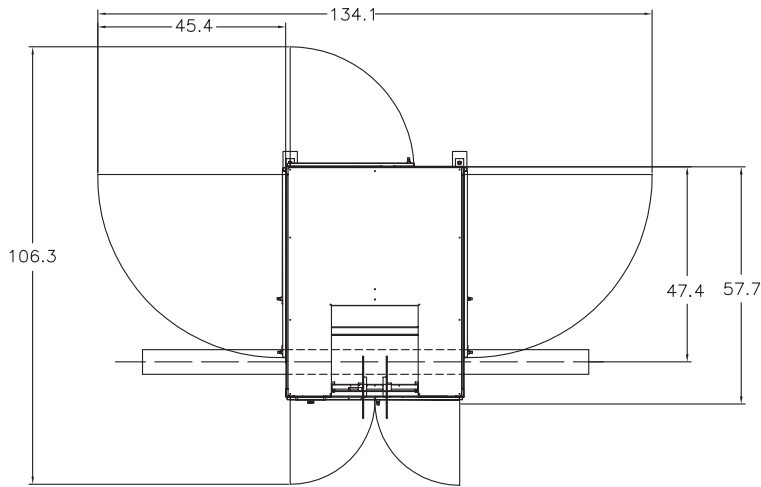
TYPICAL PRODUCT SPECIFICATIONS

Speed	Up to 30 cpm
Film Layflat Range	3.0" - 15.0"
Container Sizes	Minimum Diameter = 2.25" Maximum = 9.5" L x 6.5" W x 13.5" H
Applied Film Materials	Polyethylene
Film Specifications	2.0 - 3.0 mils with 10 % stretch
Sleeving Requirement	Containers must be empty
PLC	Allen-Bradley

HMI	7" Beijer
Air Cylinders	SMC
Air	8 cfm at 80 PSIG
Electrical Enclosure	NEMA 4X
Machine Frame	Stainless steel
Power	120 VAC, 1-Phase standard 220 VAC, 1-Phase optional

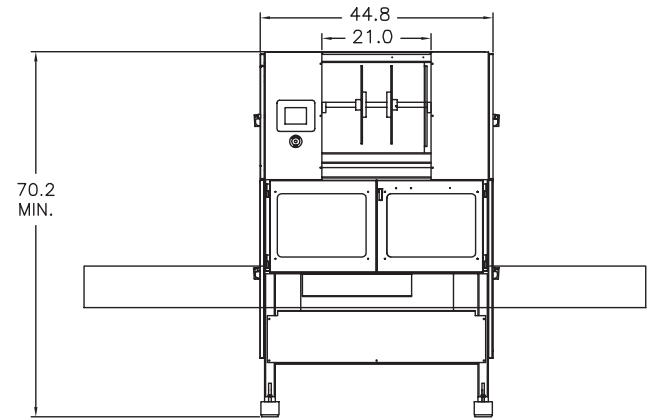
CONFIGURATION

Top view



Dimensions are in inches

Front view



OPTIONS

- **Machine Conveyor** - Through conveyor supplied with sleeve
- **Container Orientation** - Positions containers in required alignment prior to sleeve application
- **Light Stack** - Indicates machine status
- **Lift Assist** - Push button pneumatic system raises elevator to improve ease of changeovers and clearing container jams
- **Spare Parts Kit** - Recommended start-up parts inventory

STRETCH APPLICATIONS



©2025 ProMach Inc. ProMach reserves the right to change or discontinue specifications and designs shown in this brochure without notice or recourse
PM-AX-SP112_Axon_ST-1550_0719v4

PHONE
919-772-8383

EMAIL
Axon@ProMachBuilt.com

WEB
AxonCorp.com

Axon LLC
3080 Business Park Dr, Suite 103
Raleigh, NC 27610