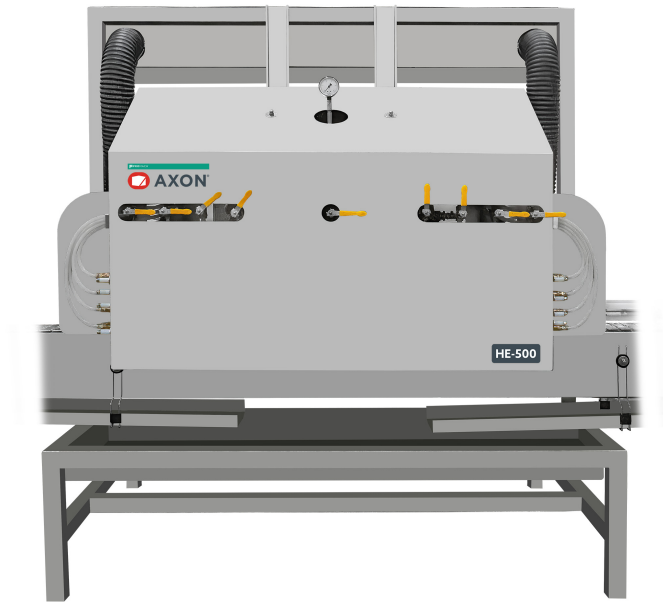




DL

DECORATIVE LABELING

HE-500® STANDALONE STEAM SHRINK TUNNEL SYSTEM



Standalone, integrated steam tunnel and steam generator provides high performance shrink option for plants without steam boilers

New HE-500® standalone steam shrink tunnels offer high quality shrink performance that only steam can provide with the convenience of an integrated, self contained steam generator. When supplied with water and electricity, HE-500 systems automatically generate high quality steam and directly supply it to an integrated shrink tunnel.

HE-500 integrated steam tunnels eliminate the need for costly centralized steam generation systems. They offer tool-less container changeovers and the changeover process is simple, intuitive and repeatable.

Like every Axon shrink tunnel, HE-500 offers the flexibility to perform five important shrink applications:

- Tamper evident bands
- Full body over the cap sleeves
- Partial body sleeves
- Full body sleeves
- Multipacks

This flexibility makes Axon shrink sleeve tunnels one of the best values in the industry.

FEATURES AND BENEFITS

- Size range flexibility - Container or multi-pack diameters up to 5" and heights up to 9.5"
- Tool-less size changeovers - Fast, simple container changeovers increase uptime and enhance productivity
- Stainless steel construction - Durable, easy to clean, and easy to maintain
- Temperature control - Simple manual adjustments of steam exhaust quickly increase or decrease tunnel temperatures - no complicated electronics to worry about
- Adjustable steam distribution - Perforated steam bars are easily positioned to achieve optimum shrink results

AXON® HE-500® STANDALONE STEAM SHRINK TUNNEL SYSTEM

TYPICAL PRODUCT SPECIFICATIONS

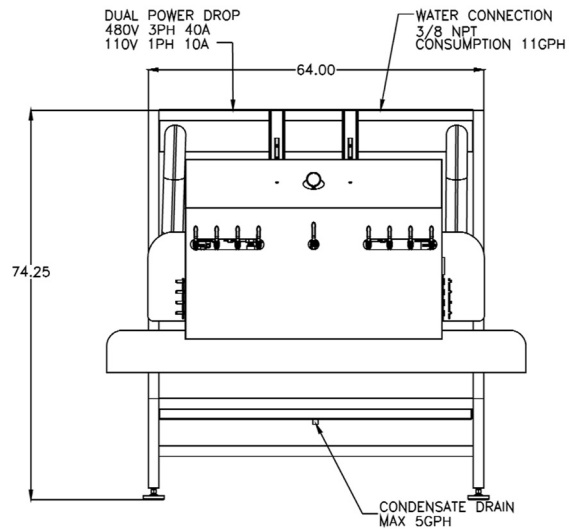
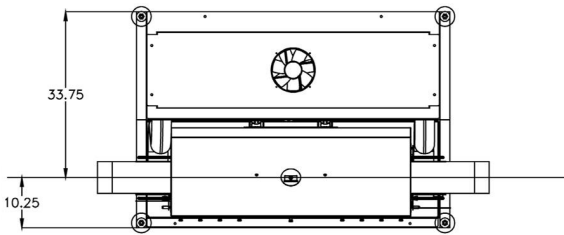
Max. Container Size	5" wide x 9.5" tall*	Footprint	64" x 44" x 84"
Water	11 gallons / hr	Boiler	30kw
Power	480 VAC, 3-phase, 40 AMPS - steam generation 110 VAC, 1-phase, 15 AMPS - controls		

*Dependent on product size and shape

CONFIGURATION

Top view

Front view



*Dimensions are in inches

OPTIONS

- Steam capture - Traps exhaust steam for ventilation outside of environment



TAMPER EVIDENT



PARTIAL



FULL BODY



FULL BODY OVER THE CAP



MULTIPACK

©2021 ProMach Inc. ProMach reserves the right to change or discontinue specifications and designs shown in this brochure without notice or recourse
HE-500_Literature

PHONE
919-772-8383

EMAIL
Axon@ProMachBuilt.com

WEB
AxonCorp.com

Axon
3080 Business Park Dr, Suite 103
Raleigh, NC 27610