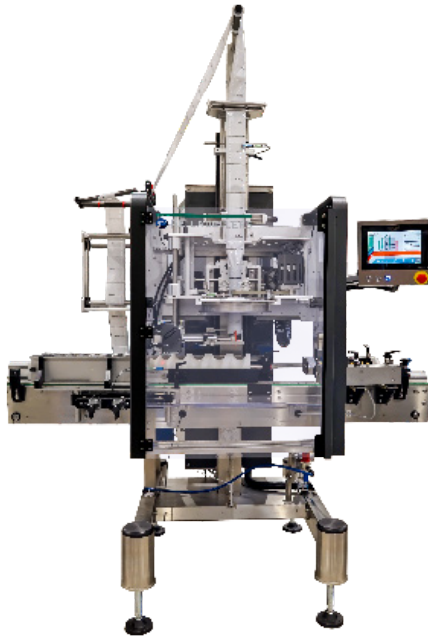




DL

 DECORATIVE
LABELING

200SL LOW SPEED SHRINK SLEEVE APPLICATOR



Dependable, steady-state operation at speeds up to 200 cpm

200SL is a value priced, small footprint, low-speed shrink sleeve applicator designed to run up to 200 containers per minute. It is a mandrel style machine designed and developed for ready-to-drink beverage cans and it is widely used in the craft beer industry.

200SL uses servo motion control to deliver consistent, repeatable performance. Container changeovers are tool-less and require less than ten minutes depending on product sizes and shapes.

They feature robust stainless steel frames that are designed with beverage plant operating conditions in mind.

FEATURES AND BENEFITS

- **Size range flexibility** - Container or multipack diameters range from 1.2" (30 mm) to 4.9" (125 mm). Larger sizes are compatible with EZ-Wide or Aurora Wide applicators
- **Fast, tool-less size changeovers** - Size changeovers can be completed in less than ten minutes depending on container sizes and shapes
- **Electronic height adjustment** - Push-button system eliminates manual hand-crank height adjustments
- **Sealed-for-life bearings** - Lubrication free bearings and servo motion control make the 200SL a lubrication free machine

SHRINK APPLICATIONS

Like every Axon shrink sleeve applicator, 200SL offers the flexibility to perform multiple shrink applications. This flexibility makes Axon shrink sleeve applicators one of the best values in the industry.



FULL BODY



TAMPER EVIDENT



TAMPER EVIDENT



PARTIAL



MULTIPACK



200SL LOW SPEED SHRINK SLEEVE APPLICATOR

TYPICAL PRODUCT SPECIFICATIONS

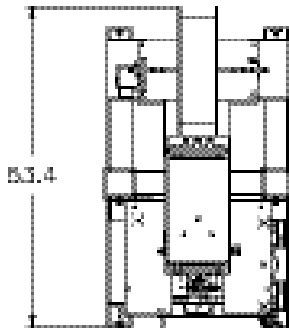
Speed	Up to 200 cpm*
Film Layflat Range	50 mm - 200 mm (1.97" - 7.87")
Controls	B&R- Optional
Product Diameter	30 mm - 125 mm (1.18" - 4.92")

Applied Materials	PVC, PETG, OPS, PLA
Film Thickness	40-70 microns (1.5 - 3.0 mil)
Power	220 VAC, 3-Phase
Frame Construction	Stainless steel

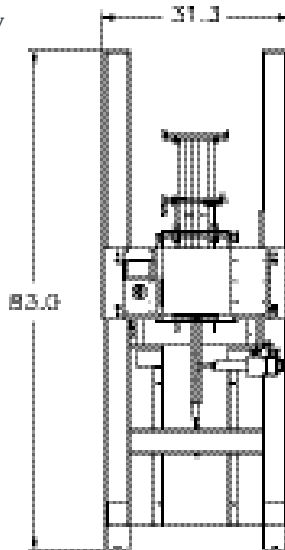
* Dependent on product size and shape

CONFIGURATION

Top view



Front view



Dimensions are in inches

OPTIONS

- **Print Registration** - Fiber optic sensor reads film registration marks so the PLC can calculate cut lengths to assure sleeve length accuracy
- **Vertical Perforator** - Adds vertical perforations for easy opening
- **Inspection Rejection System** - Detects high label, low label and no label
- **Spare Parts Kit** - Recommended start-up spare parts inventory

SHRINK APPLICATIONS



FULL BODY



TAMPER EVIDENT



TAMPER EVIDENT



PARTIAL



MULTIPACK

©2024 ProMach Inc. ProMach reserves the right to change or discontinue specifications and designs shown in this brochure without notice or recourse
Axon 200SL Sales Sheet 2024

PHONE
919-772-8383

EMAIL
Axon@ProMachBuilt.com

WEB
AxonCorp.com

Axon
3080 Business Park Dr, Suite 103
Raleigh, NC 27610